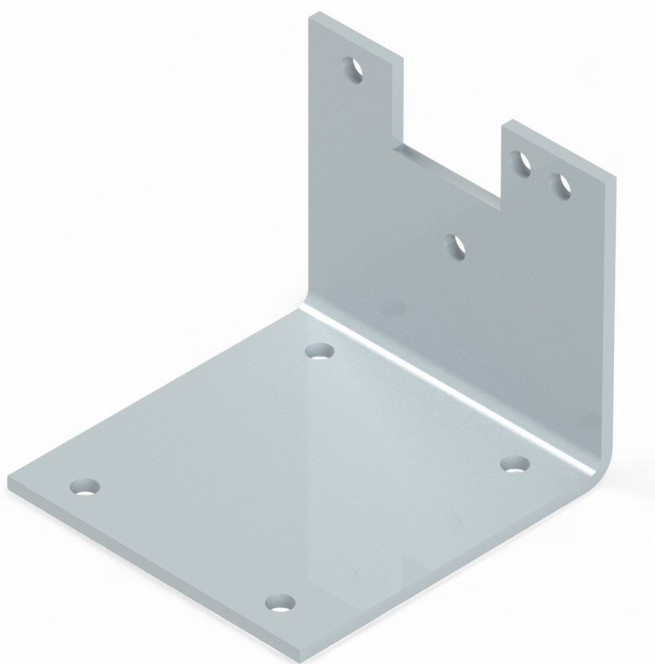


Overview

Mounting plate 85-105/H120 / 417643

Product number: 32111204



Description

- **Application:** Angled mounting plate for RW45, RW240, RW400, RW600, and RAL120/90/60/240 gear motors
- **Material:** Galvanized steel
- **Mounting:** Bolt-on or weld-on installation
- **Height:** 120 mm
- **Special feature:** Custom lengths available on request
- **Ridder Article No.:** 417643

The **Mounting Plate 85-105 H120** is a robust angled bracket for a wide range of Ridder gear motors. Its corrosion-resistant finish and flexible mounting options make it ideal for greenhouse installations requiring elevated motor positioning.