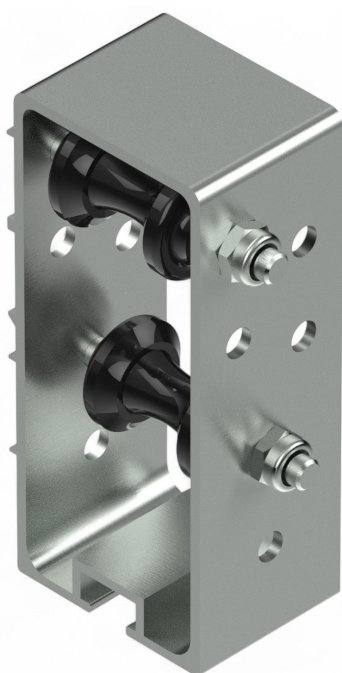


Overview

Roll support universal for 27+32 tubes

Product number: 03200040



Description

- **Application:** Push rod support for greenhouse ridge ventilation systems
- **Material:** Aluminum housing with plastic diabolo rollers
- **Installation:** Mounted using M8 screw directly onto the greenhouse structure
- **Highlight:** Adjustable rollers for flexible positioning
- **Compatibility:** Fits both 27 mm and 32 mm pipes

The **Roll support universal for 27+32 tubes** is a versatile solution for supporting push rods in greenhouse ridge ventilation systems. Its rugged aluminum body and high-quality plastic diabolo rollers ensure smooth, long-lasting guidance.

Adjustable rollers allow for precise alignment with either 27 mm or 32 mm pipes. Installation is quick and secure using an M8 screw directly into the greenhouse frame.

By delivering precise rod tracking, this roller housing contributes to the consistent and reliable movement of ventilation elements—making it an essential part of professional greenhouse infrastructure.