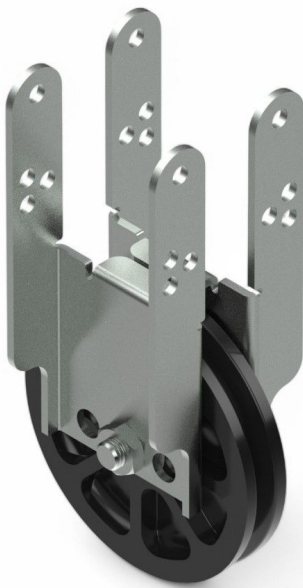


Overview

Cable pulley 100 with universal clamp 2" x 2"

Product number: 25250077-1



Options

PU (Pcs)

Description

The 100 mm pulley can be mounted on the rear side of square tubes in the shading system. Its axle position can be adjusted to one of three different heights using the three holes in the steel bracket.

The 100 mm **H** pulley is pre-mounted for **rear** mounting. Front or under mounting is also possible if the axle position of the pulley is changed.

Suitable for wire ropes up to 3 mm in diameter.

Fits the following square tubes: 2 x 2

Material:

Pulley: impact-resistant plastic

Bracket: galvanized steel