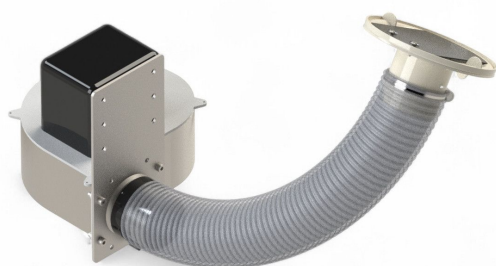


Overview

Double Poly Inflation Blower Set

Product number: 21100493



Description

- **Application:** Complete system for inflating double-layer film in greenhouse structures
- **Components:**
 - 1x Inflation fan with mounting plate
 - 1x Jumper hose D-63 mm, length 6 m
 - 1x Air transfer gasket with back-flow flap
 - 2x Hose clamps KST Ø60-65
- **Function:** Ensures reliable air inflation for optimal insulation
- **Feature:** Low maintenance and optimized for greenhouse climate conditions

Inflation system set for double-layer films is a convenient all-in-one solution for filling double-layer greenhouse films with air. The system ensures consistent internal air pressure, providing effective insulation to improve energy



Fiberlane LLC - 9254
Richmond Road - 18013
Bangor, PA

Tel.: +1 610 498 447 4
Fax.: +1 610 498 2602

email:
info(at)fiberlanellc.com

efficiency within the greenhouse.

With all necessary components included—such as a powerful inflation motor, spiral hose, and a valve with integrated back-flow flap—the set is easy to install and designed for long-term, low-maintenance operation.

Thanks to its durable materials and well-engineered construction, this system is an ideal choice for growers seeking a dependable and efficient method for insulating greenhouse structures.