

Overview

Slip joint incl. 1 spring f. screenprofil

Product number: 21100107-1

Options

PU (Pcs)

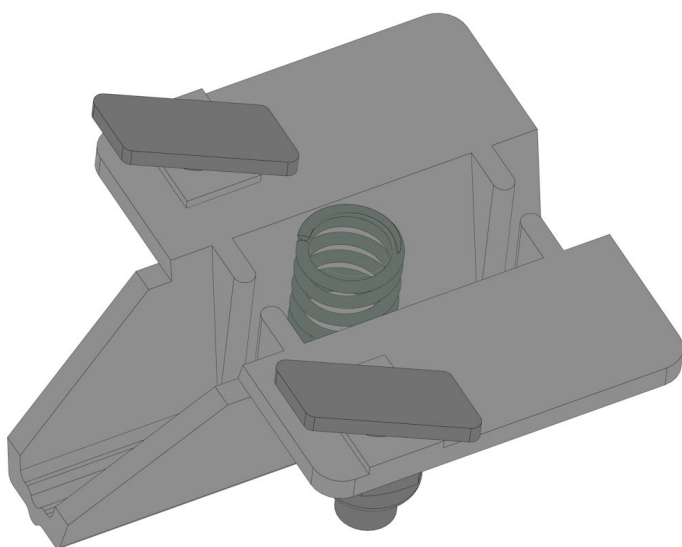
1

100

Version

Alu-Tube

Screen profile



Description

- **Application area:** Connection between drive wire rope and screen profile in shading systems
- **Material:** High-quality plastic for long-lasting use
- **Function:** Slip coupling with sliding clamping technology to protect drive wire ropes

- **Special feature:** Especially suitable for greenhouses with temperature-related material expansion

The **Slip joint incl. 1 spring f. screenprofil** gently connects the drive wire rope to the screen profile in a shading system. The integrated slip coupling with sliding clamping technology ensures secure and flexible fastening.

This technique is particularly advantageous for greenhouses where temperature-related material expansion occurs, such as with aluminum gutters.

Installation requires two hammerhead screws 6 × 16 and one M6 Nyloc inox nut.