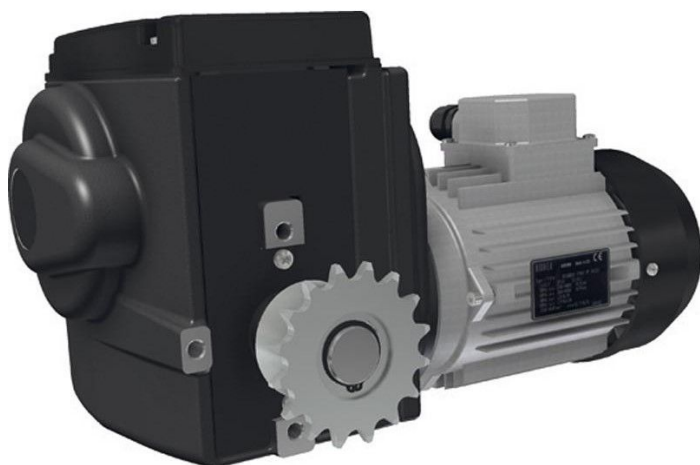


Overview

Motor gearbox RW402- 25/400-450/3/86 - Ridder art.-no. 533400

Product number: 32535385



Description

- **Application:** High-speed drive for shading and ventilation systems in greenhouses
- **Voltage:** 400-450 V, 3-phase
- **Speed:** 25 rpm
- **Protection class:** IP55 - sealed housing with linear limit switch system
- **End switch:** Built-in linear system with operating and safety switches (max. 86 turns)
- **Features:** Pre-installed chain wheel, self-locking worm gear, quiet operation
- **Optional:** RPU PositioningUnit or potentiometer feedback kit
- **Ridder Article No.:** 533400

The **RW402-25 motor gearbox** is designed for fast and precise movement in greenhouse automation. It comes with a pre-installed chain wheel and supports flexible integration with Ridder coupling systems.