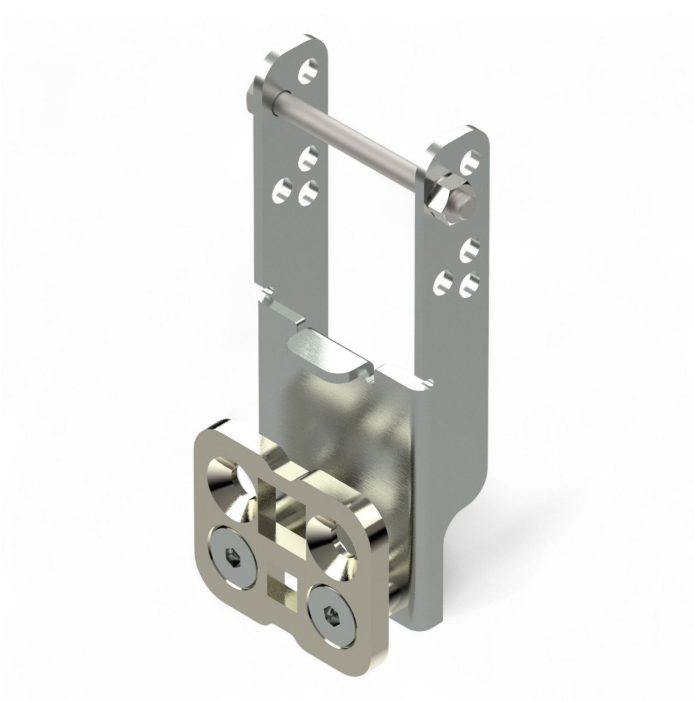


## Overview

# Tubular motor bracket 50.50 with insert 10x10 and 16x16 mm

**Product number:** 25250024



## Description

The tubular motor holder brings the drive shaft into the appropriate position for the drive system.

Created at 27.06.2025.

\* Our offers are directed exclusively to companies. We do not conclude contracts with consumers. All prices excl. VAT plus shipping costs and possible delivery charges, if not stated otherwise.



Fiberlane LLC - 9254  
Richmond Road - 18013  
Bangor, PA

Tel.: +1 610 498 447 4  
Fax.: +1 610 498 2602

email:  
info(at)fiberlanellc.com

It is suitable for suspended shading systems with gable drive. The fitter benefits from the easy handling of the bracket, as the drive shaft does not have to be aligned manually.

The bracket is perfectly matched to a 50 mm square tube and only needs to be secured with a bolt including nut.