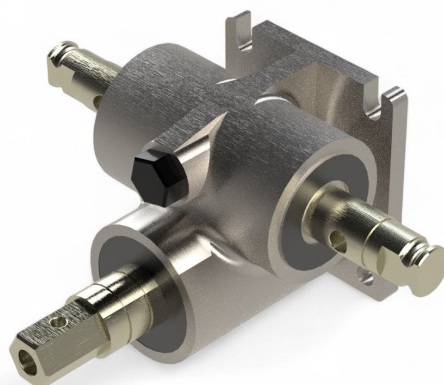


Overview

Manual Gear R17E-TGU for small application - with locking device - 1:16

Product number: 25000501



Kurbel nicht
enthalten
Crank not
included

Description

Created at 10.12.2025.

* Our offers are directed exclusively to companies. We do not conclude contracts with consumers. All prices excl. VAT plus shipping costs and possible delivery charges, if not stated otherwise.

- **Application:** Manual drive for small shading and ventilation systems
- **Material:** Sturdy construction with integrated coupling
- **Gear ratio:** 1:16
- **Function:** Directly mountable to TGU telescopic shafts or drive shafts
- **Feature:** Supplied with matching hand crank - optional extended crank or hook for elevated drives

The **Manual Drive R17E-TGU** is ideal for operating small greenhouse shading and ventilation systems. It features an integrated coupling for direct connection to TGU telescopic or standard drive shafts.

Delivered with a standard hand crank, it can also be equipped with an extended crank or hook for convenient operation of high-mounted drives. When combined with a chain wheel, even elevated installations can be easily controlled.