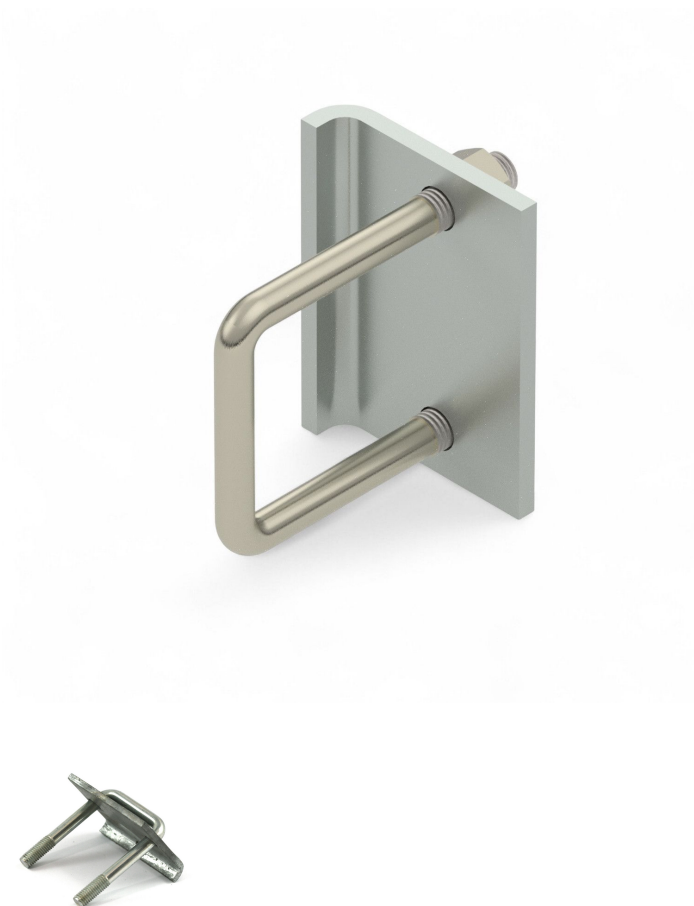


Overview

Mounting bracket square tube 50 x50 on I beams + angles - PU = 20 pcs

Product number: 38020643



Description

Created at 08.02.2026.

* Our offers are directed exclusively to companies. We do not conclude contracts with consumers. All prices excl. VAT plus shipping costs and possible delivery charges, if not stated otherwise.

- **Application:** Mounts 50×50 mm square tubes to double IP steel beams
- **Material:** Galvanized steel
- **Components:** Includes pre-mounted brackets, plates, and screws
- **Installation:** Bolt-on — no welding required
- **Packaging unit:** 20 pieces (10 complete sets)

The **Mounting bracket square tube 50×50 on I-beams + angles** provides a stable, weld-free solution for attaching square tubes to IP steel beams in greenhouse structures. Supplied as pre-mounted sets for fast and secure installation.