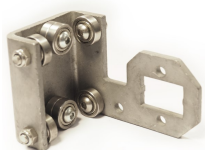
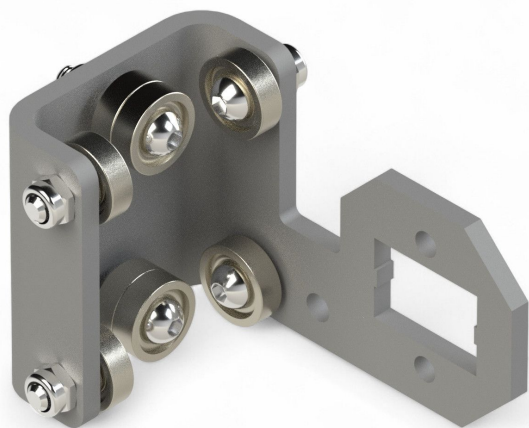


Overview

Guiding unit RB50E+\L (left)

Product number: 33100056





Fiberlane LLC.
9254 Richmond Road
US - 18013 - Bangor, PA
USA

Contact:
Telefon: +1 610 498 4474
Fax: +1 610 498 2602
E-Mail:
info@fiberlanellc.com

Description

- **Application:** Motor guide for RB50E+ tube motors in greenhouse shading systems
- **Position:** Right-side motor mounting
- **Material:** Steel, ball-bearing mounted
- **Mounting:** Two holes for bracket attachment
- **Features:** Extended fastener fits U-profile - ensures smooth motor travel

The **Guiding unit RB50E+ L** is a precision motor carriage for Ridder RB50E+ tube motors. Designed for left-side installations, it ensures smooth and stable movement along the guide rail. Ideal for roll-up screen systems in greenhouses.