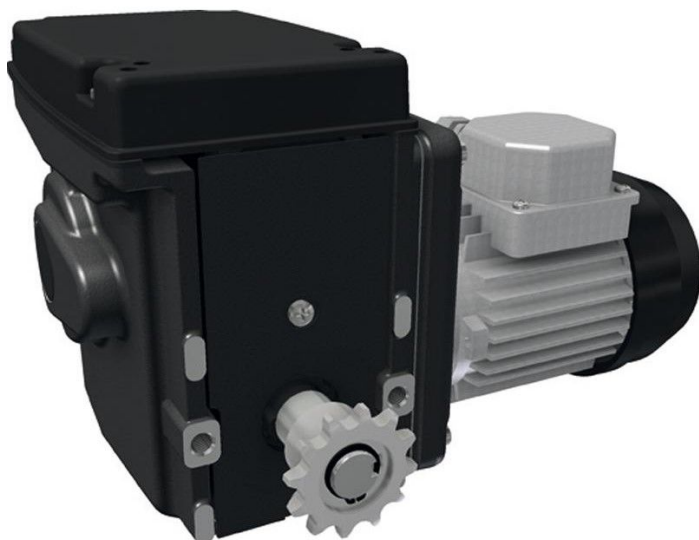


Overview

Motor gearbox RW45-5-09\115\1\60\P\CU\97

Product number: 32015220



Description

- **Application:** Drive unit for ventilation and screen systems in greenhouses or barns
- **Voltage:** 100-115 V, 1~, 60 Hz
- **Speed:** 5 rpm

- **Limit switch:** Integrated linear limit switch system with a 97-turn operating range

- **Features:**

- Self-locking worm gear for secure shaft position at standstill
- Quiet operation due to optimized gear combinations
- Maintenance-free and compact design
- Optional RPU Positioning Unit or potentiometer feedback
- Graphite-grey powder coating

The **RW45-5-09\115\1\60\P\CU\97** is a reliable gear motor for greenhouse systems operating on 115 V. It offers quiet, self-locking performance and precise limit switch control, with optional feedback integration for climate automation.