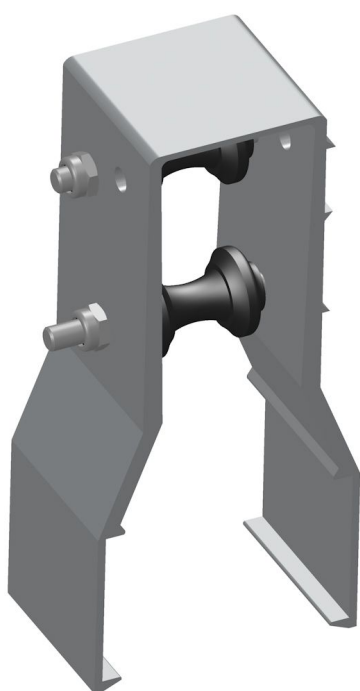


Overview

Roll support for push-pull tubes 60 x 40 mm

Product number: 03206040-1



Options

PU (Pcs)

1

32

Description

The roll support 60.40 works as a bearing for push pull tubes for truss-ventilations in greenhouses with truss.

It is compatible with trusses of 60 x 40 mm and are easily clipped on top of them.

The roll support can be used for tubes with different sizes as the diabolo rolls are mountable and very flexible.

Compatible with 27 und 32 mm tubes.

Material: aluminium-housing with diabolo rolls made of plastic