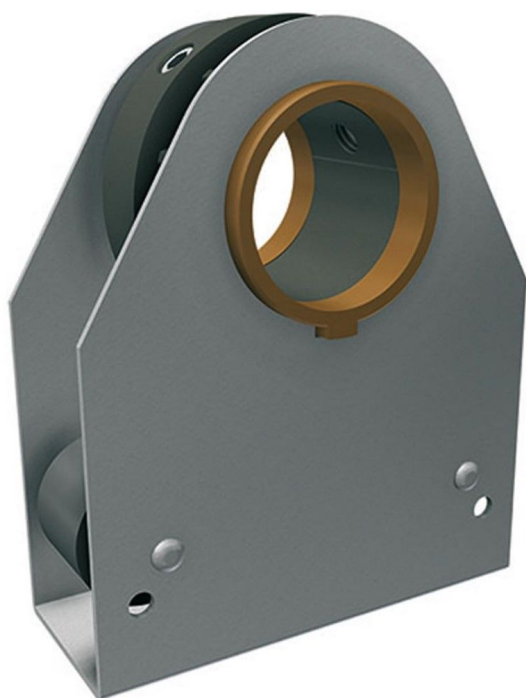


Overview

Pinion house unit for rack Ridder TU11-22 - PU = 25 pcs

Product number: 32210022



Options

Version

TU6-22

TU6-30

TU11-22

TU11-30

Description

- **Application:** Drive unit for 22 mm rack systems in greenhouse ventilation
- **Material:** Steel housing with centered bronze sintered bearing
- **Design:** Counter rollers for smooth and durable rack guidance
- **Compatibility:** For 22-3 racks and 34 mm steel drive tubes
- **Use case:** Suitable for systems under higher mechanical load
- **Packaging unit:** 25 pieces
- **Ridder Article No.:** 500010

The **Pinion Housing TU11-22** is a robust drive unit for 22 mm rack systems. Its bronze sintered bearing and counter rollers ensure long-lasting, low-wear operation even under high loads. Ideal for professional greenhouse ventilation systems.