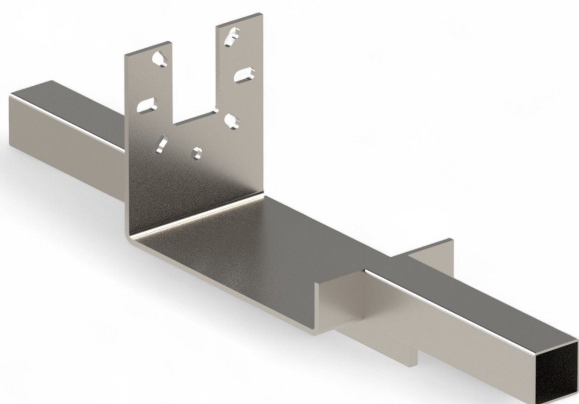


Overview

Motor mount TGU RW45/200/400/600, Viale and EWA12/14 - for suspended shading systems

Product number: 32135505





Fiberlane LLC.
9254 Richmond Road
US - 18013 - Bangor, PA
USA

Contact:
Telefon: +1 610 498 4474
Fax: +1 610 498 2602
E-Mail:
info@fiberlanellc.com

Description

- **Application:** Mounting gear motors in suspended greenhouse shading systems
- **Compatible motors:** RW45, RW200, RW400, RW600, Viale, and EWA12/14
- **Material:** Galvanized steel for high stability and corrosion resistance
- **Tube compatibility:** Square tube 50×50 mm
- **Special feature:** Simple installation and secure fastening

The **Motor Mount TGU RW45/200/400/600, Viale and EWA12/14** is designed for secure installation of gear motors in suspended shading systems. It fits square tubes 50×50 mm and ensures long-lasting, vibration-resistant mounting in greenhouse environments.