

Overview

Vent pulley unit - including hose clamps - PU = 50 pcs

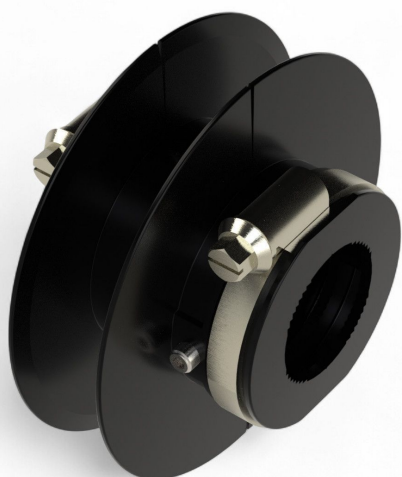
Product number: 22000128

Options

PU (Pcs)

1

50



Description

- **Application:** Guided and controlled winding of webbing in side ventilation systems with descending fabrics
- **Material:** Plastic
- **Installation:** Mounted with hose clamps and set screw on the drive shaft

- **Feature:** Two-part design allows for retrofitting
- **Compatible Tube Diameter:** 32–34 mm
- **Packaging Unit:** 50 pcs

Vent Pulley Unit 1" is specifically designed for side ventilation systems with falling fabric configurations. It enables a **guided and controlled winding process** of the webbing to ensure consistent movement and tension.

The **two-part construction** allows for easy post-installation mounting. It is secured on both sides of the drive shaft using hose clamps and further stabilized via the included set screw.

Designed to fit tubes with a diameter of **32–34 mm**, the roller offers a reliable and practical solution for controlling webbing motion in greenhouse ventilation systems.