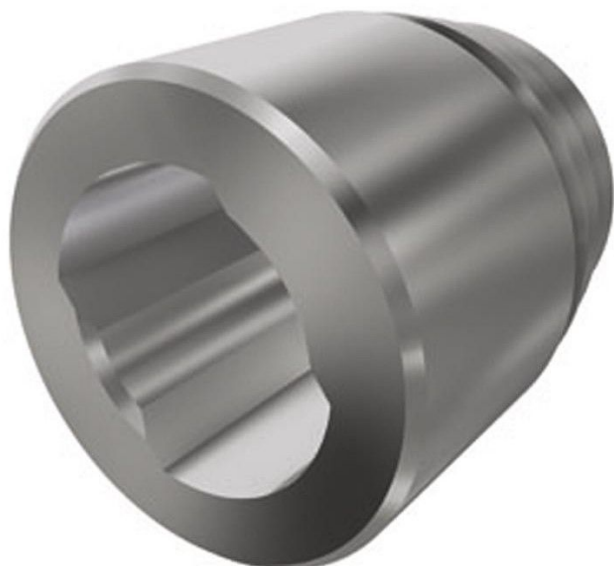


Overview

weld/sleeve coupling P26.5\B5/4"\ST\L44mm\WELD

Product number: 32300098



Description

- **Application:** Weld-on sleeve coupling for connecting P26.5 mm drive shafts to 5/4" steel tubes
- **Material:** Galvanized steel
- **Drive shaft:** P26.5 mm with 20 mm flat sides
- **Tube connection:** Welded to 5/4" steel shaft (Ø 42 mm)
- **Length:** 44 mm
- **Ridder Article No.:** 421978

The **Weld/sleeve coupling P26.5 B5/4" STL44 mm** is used to connect flat-sided P26.5 mm drive shafts to 5/4" steel tubes via welding. Its galvanized finish ensures durability and corrosion resistance in greenhouse environments.