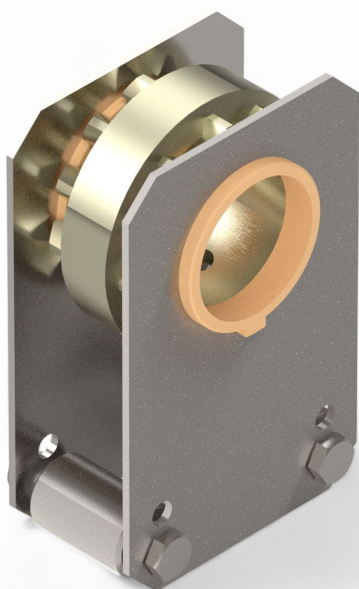


Overview

Pinion house unit Ridder TU21-40 - Ridder Art.-Nr.: 500040

Product number: 32200021



Description

The pinion house unit TU 21-40 is used as a direct drive for shading systems with push-pull tube drives.

Material: galvanized steel, pinions are hardend especially

Created at 30.06.2025.

* Our offers are directed exclusively to companies. We do not conclude contracts with consumers. All prices excl. VAT plus shipping costs and possible delivery charges, if not stated otherwise.