

Overview

Nocturna - BlackOut roll-up - grey/grey - UV-resistant - 325 cm

Product number: 15000282

Options

Color

grey-grey

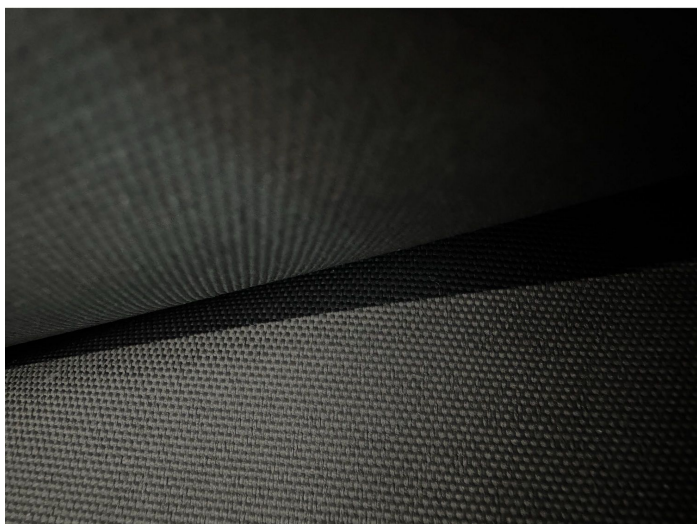
grey-silver

silver-silver

Width (cm):

320

325





Fiberlane LLC.
9254 Richmond Road
US - 18013 - Bangor, PA
USA

Contact:
Telefon: +1 610 498 4474
Fax: +1 610 498 2602
E-Mail:
info@fiberlanellc.com

Description

- **Application:** Coated screen fabric for 100% blackout shading systems
- **Material:** Tear-resistant and waterproof textile
- **Color:** Grey/Grey
- **Width:** 325 cm
- **UV Stability:** Designed for long-term use
- **Features:** Dual-sided coating for indoor and outdoor installation

NOCTURNA Blackout Fabric - Grey/Grey is a heavy-duty screen material engineered for total blackout performance. It is waterproof and offers exceptional tensile strength—making it perfect for partitioning areas or integrating into blackout roller screen systems.

With dual-layer coating on both sides, it withstands weather exposure outdoors just as reliably as it provides light-blocking separation indoors. Rugged, durable, and purpose-built for lasting performance.