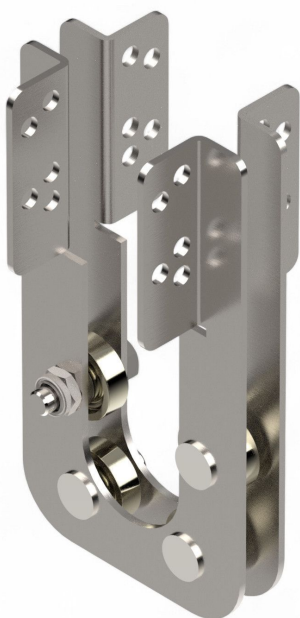


Overview

4 bearing shaft support 1" vertical - Gable drive - PU = 20 pcs

Product number: 25100112



Options

PU (Pcs)

1

20



Fiberlane LLC.
9254 Richmond Road
US - 18013 - Bangor, PA
USA

Contact:
Telefon: +1 610 498 4474
Fax: +1 610 498 2602
E-Mail:
info@fiberlanellc.com

Description

Our vertical bearing shaft supports 1" allows to set the drive shaft as close as possible to the gable end. In such a construction the shading screens do not set against the truss , but lay either over(in suspended system) or below (in lay- flat system) the square tube, covering the whole area up to the gable end. The dalay of screens is basically not needed.

The drive shaft can easily and quickly be pre-assembled on the ground. So dangerous, time-consuming works underneath the roof can be avoided.

The bearings are attached onto the square tubes and locked with locking screws. If needed, they can be moved