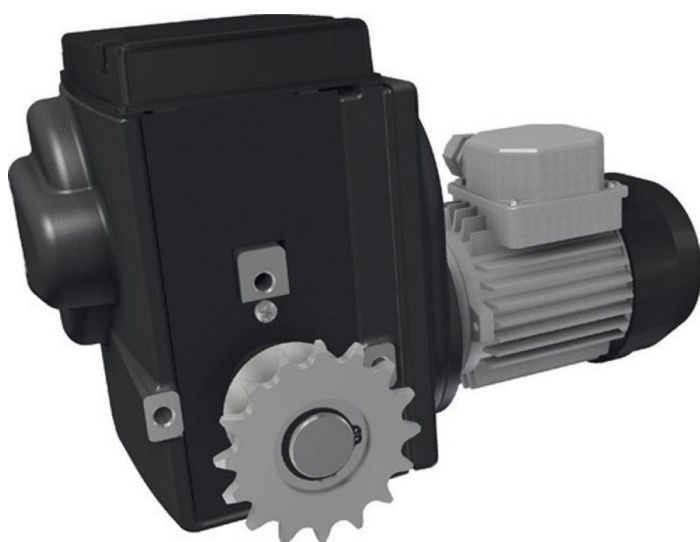


Overview

Motor gearbox RW 245 400-460Volt/3-Phase/3 rpm

Product number: 32435380



Description

Created at 08.12.2025.

* Our offers are directed exclusively to companies. We do not conclude contracts with consumers. All prices excl. VAT plus shipping costs and possible delivery charges, if not stated otherwise.

- **Application:** Maintenance-free drive for ventilation, shading, and lifting systems in greenhouses and livestock buildings
- **Voltage:** 400-450 V, 3-phase
- **Speed:** 5 rpm
- **Protection class:** IP55 – dust and water resistant
- **End switch:** Patented linear limit switch system with high switching accuracy
- **Temperature range:** 0-60 °C
- **Features:** Quiet operation, self-locking worm gear, optional RPU PositioningUnit or potentiometer kit
- **Ridder Article No.:** 502320

The **RW245-37 motor gearbox** is a rugged, low-maintenance drive unit designed for greenhouse automation. Its precise limit switch system and quiet, self-locking transmission ensure reliable performance in demanding environments.