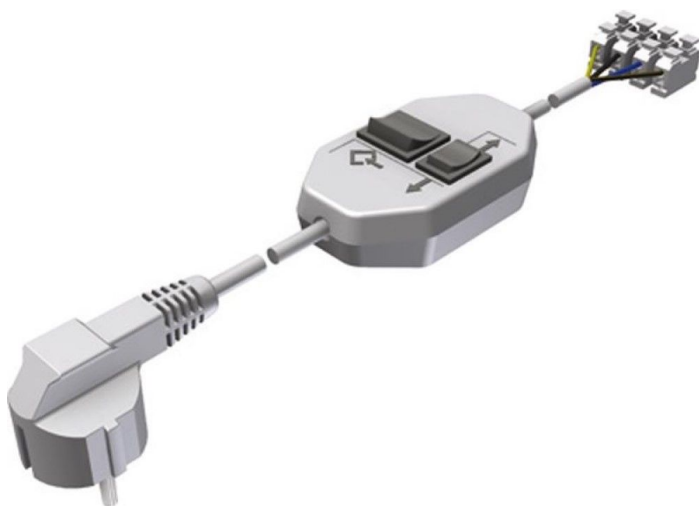


Overview

Adjusting switch RB50E+ / RB120E+ - Ridder Art. Nr.:772001

Product number: 33100057



Description

- **Application:** Adjustment tool for setting end switches in RB50E+ and RB120E+ tube motors
- **Compatibility:** For Ridder tube motors with electronic limit switch systems
- **Function:** Enables precise configuration of motor stop positions
- **Use case:** Required during installation or recalibration of motor travel limits
- **Ridder Art. Nr.:772001**

The **Adjusting switch RB50E+ / RB120E+** is used to configure the electronic end switch system in Ridder tube motors. It ensures accurate stop positions and protects the motor from overrun or overload.