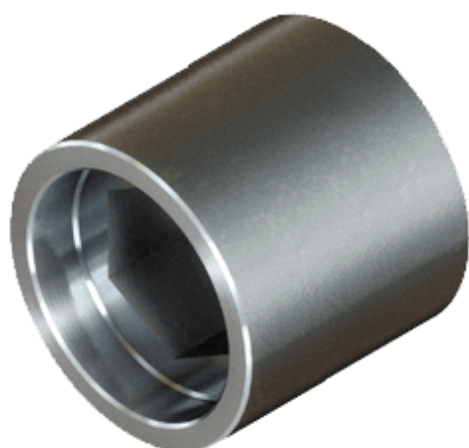


## Overview

# Lock weld coupling SKS 201

**Product number:** 31150201



## Options

### Version

SKS 201

## Description

- **Application:** Transmission of drive torque between gearboxes
- **Design:** No angular compensation - axial locking on one side
- **Material:** Weldable steel, untreated
- **Installation:** Welded to the ends of custom connection pipes and pushed onto the gearbox shaft
- **Note:** Connection pipe and SKS must be aligned - allow approx. 3 mm expansion between coupling and shaft

The **Lock Welded Coupling SKS 201** is used to transfer torque between gearboxes in greenhouse drive systems. It is welded to the ends of custom connection pipes and pushed onto the gearbox shaft. The coupling features axial locking and must be aligned precisely during installation. A small expansion gap should be considered to ensure proper function.