

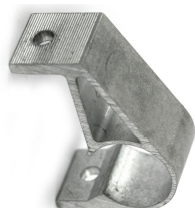
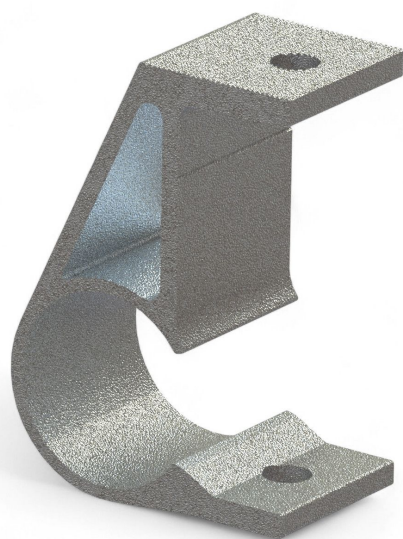
Overview

Table clamp 27.60

Product number: 03100222-1

Options

PU (Pcs)



Description

- **Application area:** Connecting push rods and screen profiles in shading systems
- **Material:** High-quality, corrosion-resistant steel for long-lasting stability
- **Installation:** Easy attachment to 27 mm push rods and 19 mm pipes or screen profiles
- **Special feature:** Suitable for constructions with medium fabric spacing

The **Table clamp 27.60** is a reliable solution for connecting push rods to screen profiles or pipes in shading systems. It ensures stable and secure fastening, supporting the long-term operation of the system.

Thanks to its robust construction, the clamp is particularly suitable for applications with medium fabric spacing and standard shading fabrics.

This product is ideal for professional use in greenhouses and contributes to the efficiency and durability of shading systems.