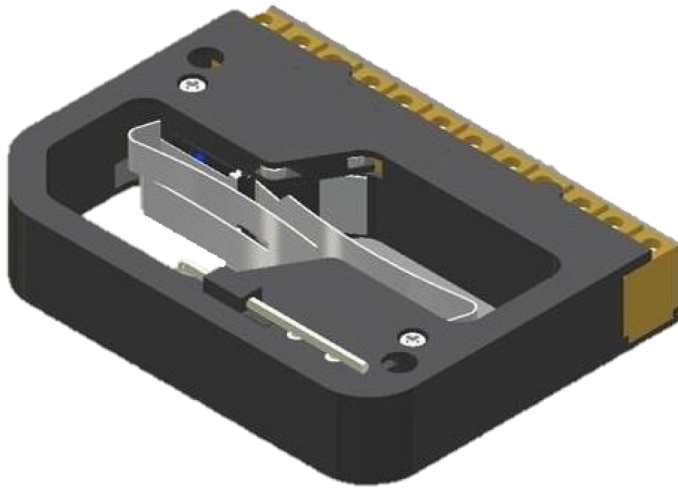


Overview

Ridder - Limit Switch RSU 50

Product number: 32200024



Options

Version

RSU 50

RSU 90

Description

- **Application:** End-position control for Ridder RW gear motors
- **Function:** Linear switching system driven by the motor's output shaft
- **Compatibility:** For RW motors with 55, 86, 97, or 860 turns between start and end position
- **Installation:** Direct mounting on the gear motor
- **Special feature:** Compact design with high switching precision
- **Ridder Article No.:** 501094

The **RSU 50 Limit Switch System** is a compact and robust solution for controlling the end positions of RW gear motors. It ensures accurate movement limits and is ideal for use in greenhouse ventilation and shading systems.