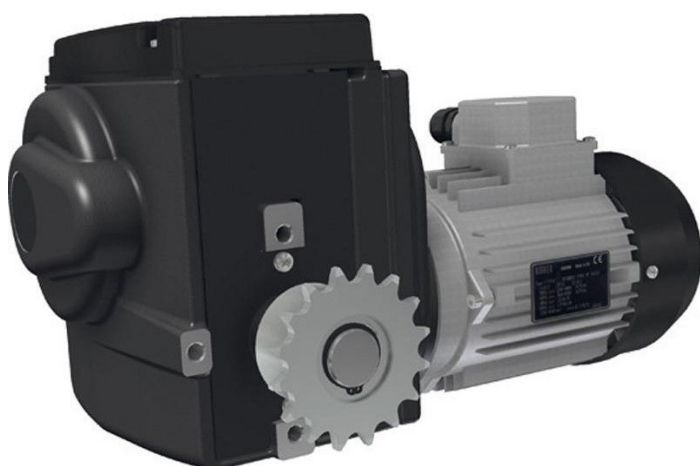


Overview

Motor gearbox Ridder RW403\400-450 Volt - 400- 450 V - 3 Phase / 3 rpm - Ridder Art.-Nr.: 502210

Product number: 32535381



Description

Created at 07.12.2025.

* Our offers are directed exclusively to companies. We do not conclude contracts with consumers. All prices excl. VAT plus shipping costs and possible delivery charges, if not stated otherwise.

- **Application:** Drive unit for ventilation, shading, and lifting systems in greenhouses or livestock buildings
- **Voltage:** 400–450 V, 3-phase
- **Speed:** 3 rpm
- **Protection class:** IP55 – sealed housing with linear limit switch system
- **End switch:** Built-in linear system with operating and safety switches (max. 86 turns)
- **Features:** Self-locking worm gear, quiet operation, graphite-grey powder coating
- **Optional:** RPU PositioningUnit or potentiometer feedback kit
- **Ridder Article No.:** 502210

The **RW403 motor gearbox** is a reliable and quiet drive solution for greenhouse systems. Its integrated switching system ensures precise control and long service life.