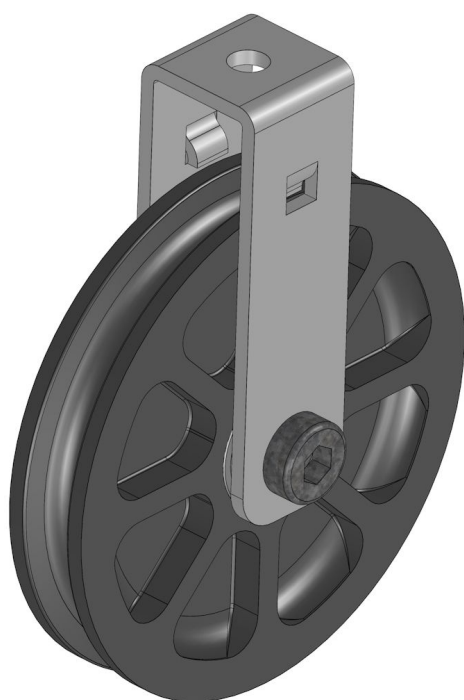


Overview

Cable pulley 100 with clamp - Wires until

Product number: 04200126-1

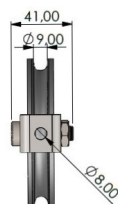
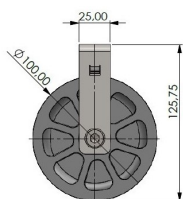


Options

PU (Pcs)

1

25



Description

This 100 mm pulley is bolted to a clamp. If needed, the pulley can be reclamped and removed or replaced.

Material:

Pulley: high impact resistant plastic

Clamp: Galvanized steel

Created at 20.05.2024.

* Our offers are directed exclusively to companies. We do not conclude contracts with consumers. All prices excl. VAT plus shipping costs and possible delivery charges, if not stated otherwise.