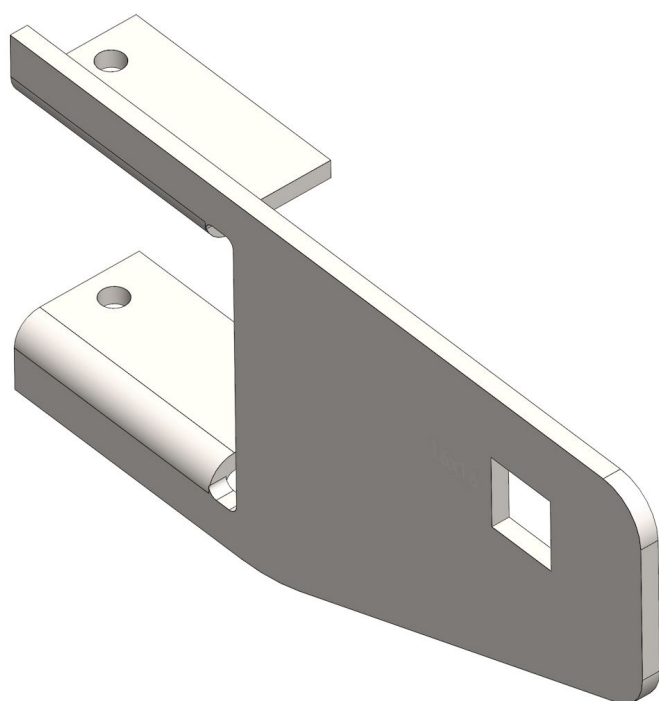


Overview

Tube motor support on 50.50 square tubes for RB120 - 16x16 mm

Product number: 25250022



Options

Version

E+

RB50 / FRM 50

RB120

Image not found or type unknown

Description

The tube motor support puts the drive shaft into the perfect position for the drive system. This model is suitable for gable end suspended shading systems. It makes installation much easier, because there is no need to place drive shaft manually.

During mounting works the square tubes can directly be inserted onto the motor support. Bolts and nuts are not included.

Material: Galvanized steel

The tube motor support is compatible with the tube motors RB 120

Created at 20.05.2024.

* Our offers are directed exclusively to companies. We do not conclude contracts with consumers. All prices excl. VAT plus shipping costs and possible delivery charges, if not stated otherwise.