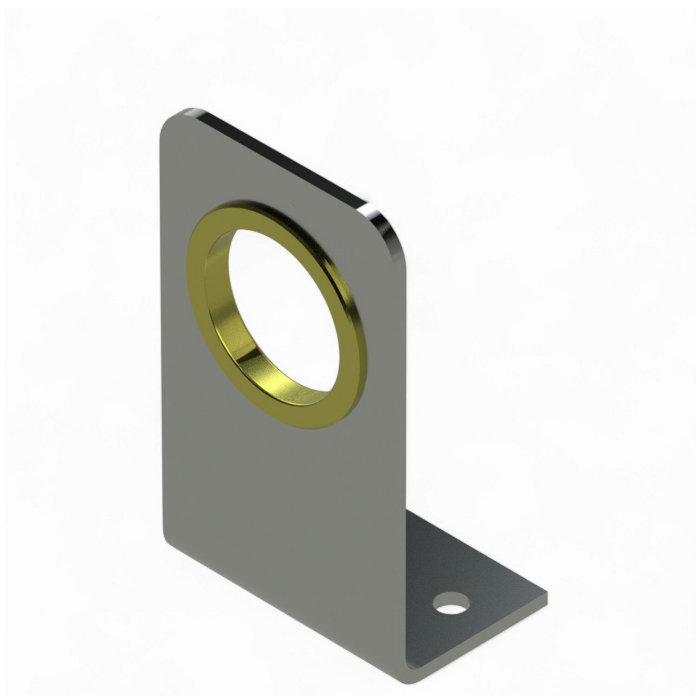


Overview

Alu-Support plate 40

Product number: 24100603



Description

- **Application:** Support plate for fastening drive shafts in shading systems
- **Material:** Aluminum for high stability and corrosion resistance
- **Mounting:** Angled shape ensures secure attachment to structural elements
- **Height:** Center of pipe: 40 mm
- **Special feature:** Lightweight design for easy installation

The **Angled Aluminum Support Plate 1"** offers a reliable solution for mounting drive shafts in greenhouse shading systems. Its angled shape ensures a stable and secure installation.

The high-grade aluminum provides excellent resistance to environmental conditions and long service life. Ideal for professional greenhouse applications, it enhances the efficiency and durability of shading structures.