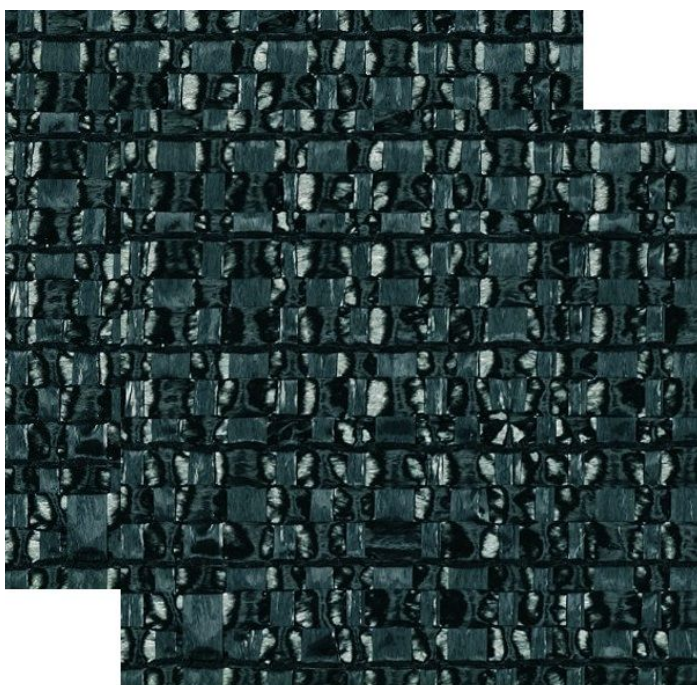


## Overview

# PH1 - FP Darkening Screen, double black aprox. 99,5 % - 3,25 m

Product number: 19001100



## Options

### Width (cm):

325

430

530

## Description

- **Application:** Double-layer woven blackout fabric for laid and suspended shading systems
- **Structure:** Dual-ply construction for complete light exclusion
- **Material:** Both layers made from black woven fabric
- **Width:** 325 cm
- **Mounting:** Ideal for suspended systems - curtain tape finishing available

**PH1-FP Blackout Woven Fabric Double - 325 cm** is a technical light-blocking fabric engineered for greenhouse blackout installations. Its dual-layer design guarantees full darkening, making it especially suitable for sensitive crops or light-controlled growing conditions.

Compatible with hanging configurations, the material can be finished with curtain tape to integrate seamlessly into rail-based or suspended systems.

## Product information

<b>Flame retardant (DIN 4102 B1):</b>	No
---------------------------------------	----