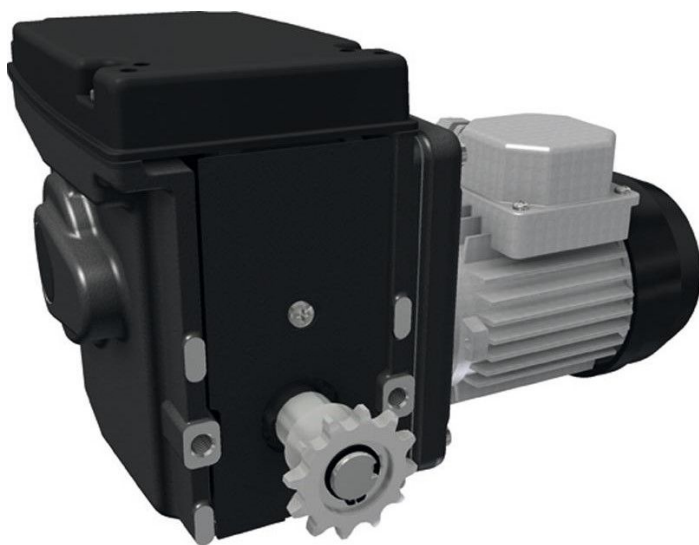


Overview

Motor gearbox Ridder RW 45-1-09\400\3\97

Product number: 32035229



Description

- **Application:** Drive unit for horizontal shading and ventilation systems
- **Voltage:** 400 V, 3~, 50 Hz
- **Switching range:** Integrated linear limit switch system with a switching range of 86 turns
- **Limit switch:** Integrated linear limit switch system
- **Features:**
 - Self-locking worm gear for secure shaft position at standstill
 - Quiet and compact design
 - Delivered with pre-installed chain wheel for chain coupling
 - Optional: RPU Positioning Unit or potentiometer feedback
- **Ridder Article No.:** 502000

The **RW 45-1-09 / 400 V** is a three-phase gear motor for greenhouse shading and ventilation. It combines quiet operation with robust performance and is equipped with a linear limit switch system for precise control. The pre-installed chain wheel simplifies integration into existing systems.