

Overview

Lead edge connector 19 L - PU = 300 pcs

Product number: 22000105

Options

PU (Pcs)

1

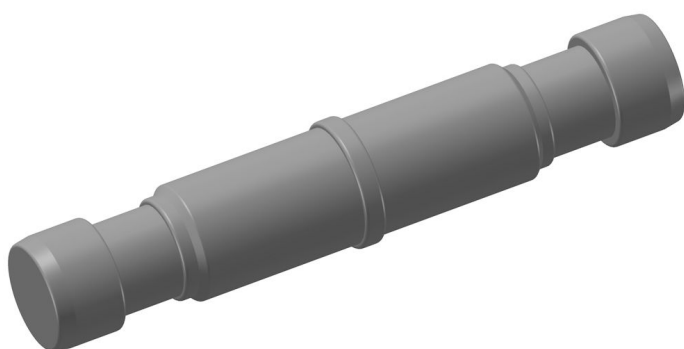
250

300

Version

L

S



Description

The lead edge connector 19 L is a convenient, static connection for 19 mm aluminium and steel tubes.

The piece is so designed that it can be plugged and fixed with the tongs. Compared to a commonly used bolting-connectors this one can be mounted quicker and easier. However the tubes cannot be disconnected from each other.