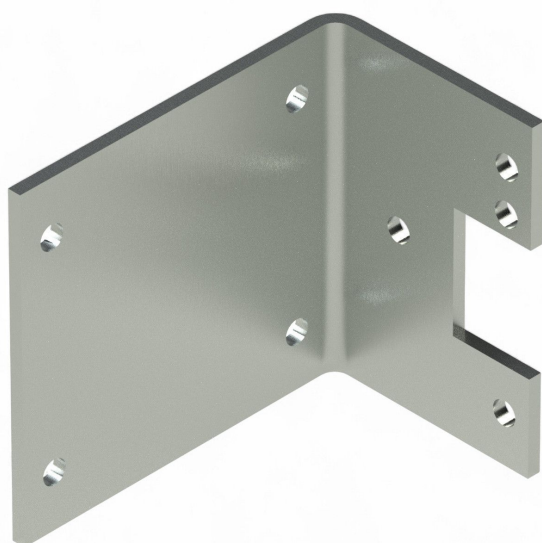


Overview

Mounting plate 85-105/H90 / 417636

Product number: 32111203



Description

- **Application:** Angled mounting plate for RW45, RW240, RW400, RW600, and RAL120/90/60/240 gear motors
- **Material:** Galvanized steel
- **Mounting:** Bolt-on or weld-on installation
- **Special feature:** Custom lengths available on request
- **Height:** 90 mm
- **Ridder Article No.:** 417636

The **Mounting Plate 85-105 H90** is a versatile angled plate for a wide range of Ridder gear motors. It offers flexible mounting options and high corrosion resistance, making it suitable for demanding greenhouse environments.