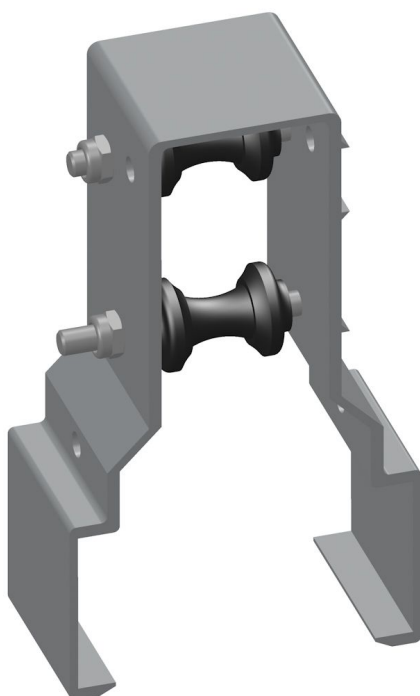


Overview

roll support for push-pull tubes 80 x 40 mm / 27 + 32

Product number: 03208040-1



Options

PU (Pcs)

1

32

Description

The roll support 80.40 works as a bearing for push pull tubes for truss-ventilations in greenhouses with truss.

It is compatible with trusses of 80 x 40 mm and are easily clipped on top of them.

Created at 20.05.2024.

* Our offers are directed exclusively to companies. We do not conclude contracts with consumers. All prices excl. VAT plus shipping costs and possible delivery charges, if not stated otherwise.



Fiberlane LLC - 9254
Richmond Road - 18013
Bangor, PA

Tel.: +1 610 498 447 4
Fax.: +1 610 498 2602

email:
info(at)fiberlanellc.com

The roll support can be used for tubes with different sizes as the diabolo rolls are mountable and very flexible.

Compatible with 27 und 32 mm tubes.

Material: aluminium-housing with diabolo rolls made of plastic