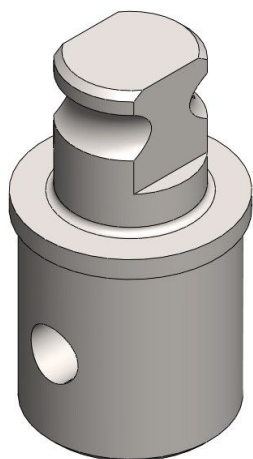


Overview

Adaptor Tube

Product number: 24100401



Description

This adapter gets inserted in telescopic systems in between the built-in U-joint and the steel tubes.

It is suitable with 34 mm tubes with a wall thickness of 2,5 mm and 32 mm tubes with 1,5 mm wall thickness.

It specially fits the TGU TransAxle Unit as well as single and double U-joints.

Material: Galvanized steel

Created at 10.05.2024.

* Our offers are directed exclusively to companies. We do not conclude contracts with consumers. All prices excl. VAT plus shipping costs and possible delivery charges, if not stated otherwise.