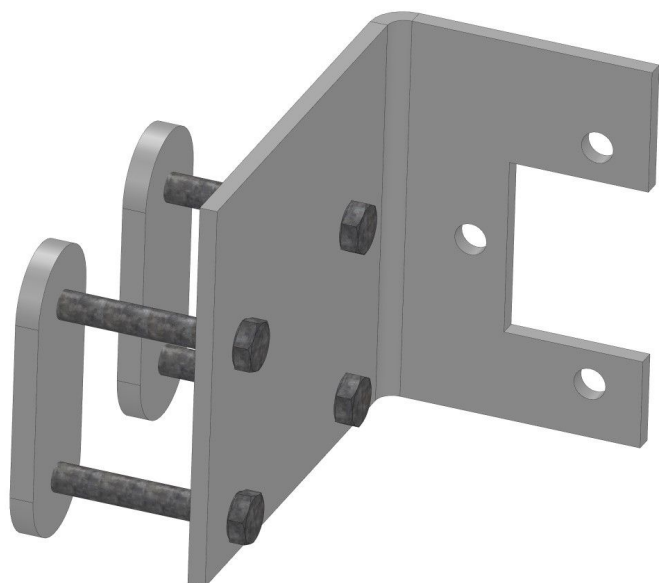


Overview

Motor mounts 2.2 for motor gearbox Ridder RW 45 on TGU-systems

Product number: 32135145



Description

The motor mount puts the drive shaft into the perfect position for the drive system. This model is suitable for suspended shading systems and makes installation easy, because there is no need to place drive shaft manually. The square tubes can directly be inserted onto the motor mount during construction.

The motor mount is compatible with the gear motor RW 200, 400 and 600

Material: Galvanized steel