

Overview

Tube connectors halves 1" - incl. 4 bolts M8 x 45 - PU = 25 Sets

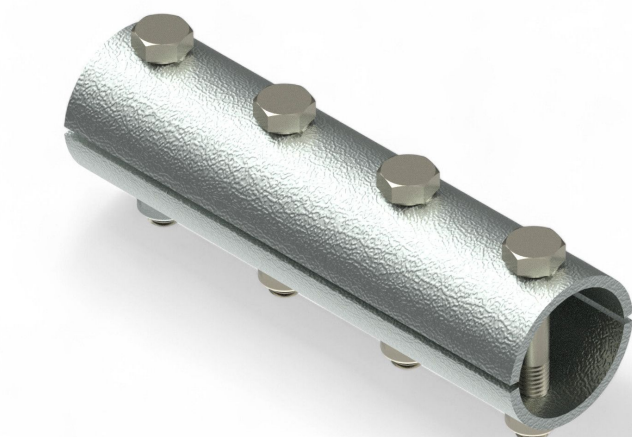
Product number: 03032645

Options

PU

1

25



Description

- **Application:** Joining 34 mm steel tubes in drive shafts
- **Material:** Hot-dip galvanized steel for superior strength and corrosion resistance

- **Installation:** Screwed together using included M8x50 bolts
- **Highlight:** Greater stability and longevity compared to welded joints
- **Packaging Unit:** 25 sets

1" Steel Tube Clamp Connectors incl. M8x50 Screws provide a secure and reliable connection for 34 mm steel tubes in drive shaft assemblies. Unlike welded joints, these clamp connectors offer improved durability and structural integrity.

Each set includes M8x50 screws for quick installation. Thanks to the hot-dip galvanized finish, the connectors offer excellent corrosion protection, making them well-suited for long-term use in challenging environments.