

Overview

Diabolo roll 27.32 - with stamped metal bracket sideguides - PU = 50 pcs

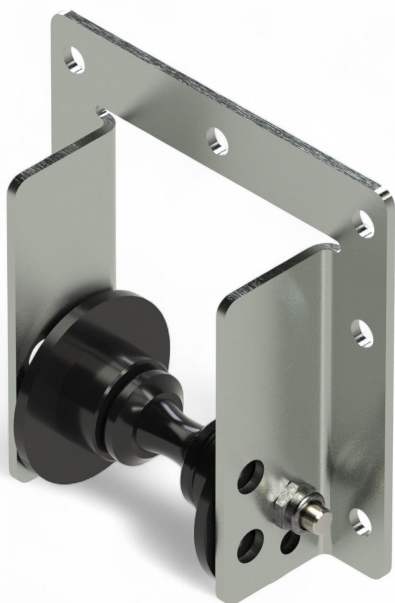
Product number: 04200300

Options

PU (Pcs)

1

50



Description

- **Application:** Guiding push rods in shading systems with push-drive mechanisms
- **Material:** Plastic diabolo roller with zinc-coated steel housing
- **Side Guidance:** Integrated side disc for optimal push rod alignment
- **Packaging Unit:** 50 pcs

Diabolo Roller 27.32 with Stamped Steel Housing and Side Guide is tailored for greenhouse shading systems utilizing push rod drives. It ensures precise guidance and smooth movement of rods through consistent lateral alignment.



Fiberlane LLC - 9254
Richmond Road - 18013
Bangor, PA

Tel.: +1 610 498 447 4
Fax.: +1 610 498 2602

email:
info(at)fiberlanellc.com

The built-in side disc helps maintain correct positioning of the push rod, ensuring stable and reliable operation. The rugged stamped steel housing adds durability and resistance in demanding greenhouse environments.