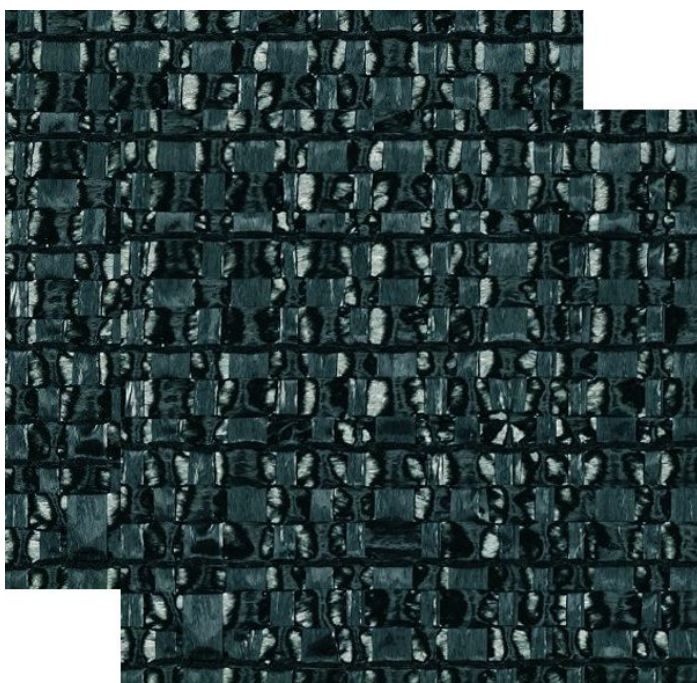


Overview

PH1 - FP Darkening Screen, double black - 480 cm

Product number: 19001102



Options

Width (cm):

400

430

480

530

Description

- **Application:** Fully darkening woven fabric for horizontal and suspended blackout screens
- **Structure:** Two-ply design ensures reliable shading
- **Material:** Double black woven textile layers
- **Width:** 480 cm
- **Mounting:** Suitable for hanging systems - can be finished with curtain tape

PH1-FP Blackout Woven Fabric Double - 400 cm delivers robust light exclusion with added width. Thanks to its dual-layer composition, it prevents light penetration even in demanding greenhouse or partitioning applications.

Tailored for suspended system use, the fabric is adaptable to custom-made installations with optional sewing configurations.

Product information

Flame retardant (DIN 4102 B1):	No
---------------------------------------	----